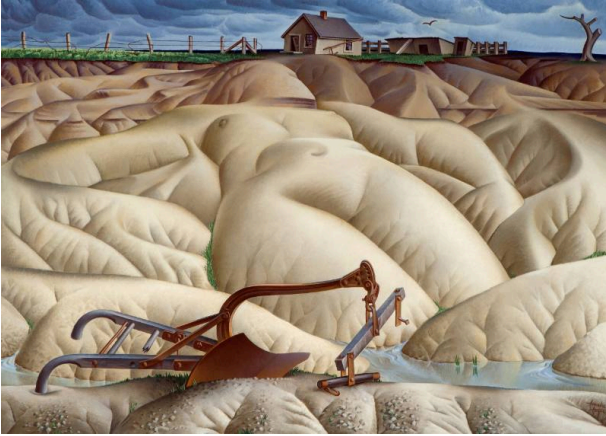


# Basic Detail Report

---



## Erosion No. 2 - Mother Earth Laid Bare

### Date

1936

### Primary Maker

Alexandre Hogue

### Medium

Oil on canvas

### Description

Desolate and barren landscape represented in the form of a female nude. In the foreground an iron plow is depicted and on the horizon Hogue presents a dilapidated farmhouse. In the extreme upper right corner he inserts an old tree, leafless and isolated.

### Dimensions

Frame: 46 × 61 1/2 × 2 1/2" (116.8 × 156.2 × 6.4 cm) Unframed canvas: 40 × 55" (101.6 × 139.7 cm)