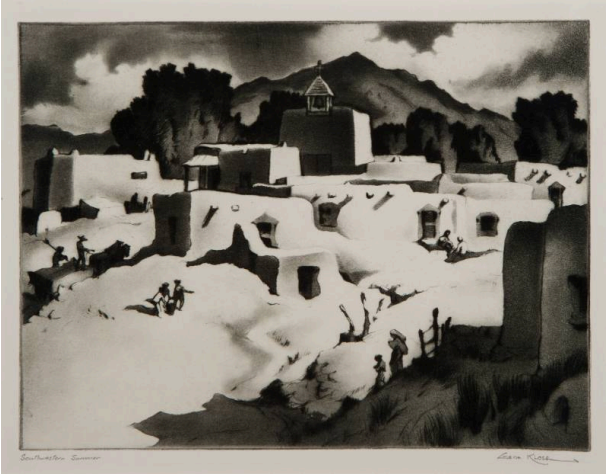


Basic Detail Report



Southwestern Summer

Date

1945

Primary Maker

Gene Kloss

Medium

Aquatint and drypoint

Description

New Mexico pueblo village; a mission type church at center, and trees and mountains as backdrop. Several people engaged in various activities are scattered throughout the composition.

Dimensions

Image: 8 3/16 × 11" (20.8 × 27.9 cm)